

# AI & Ethics

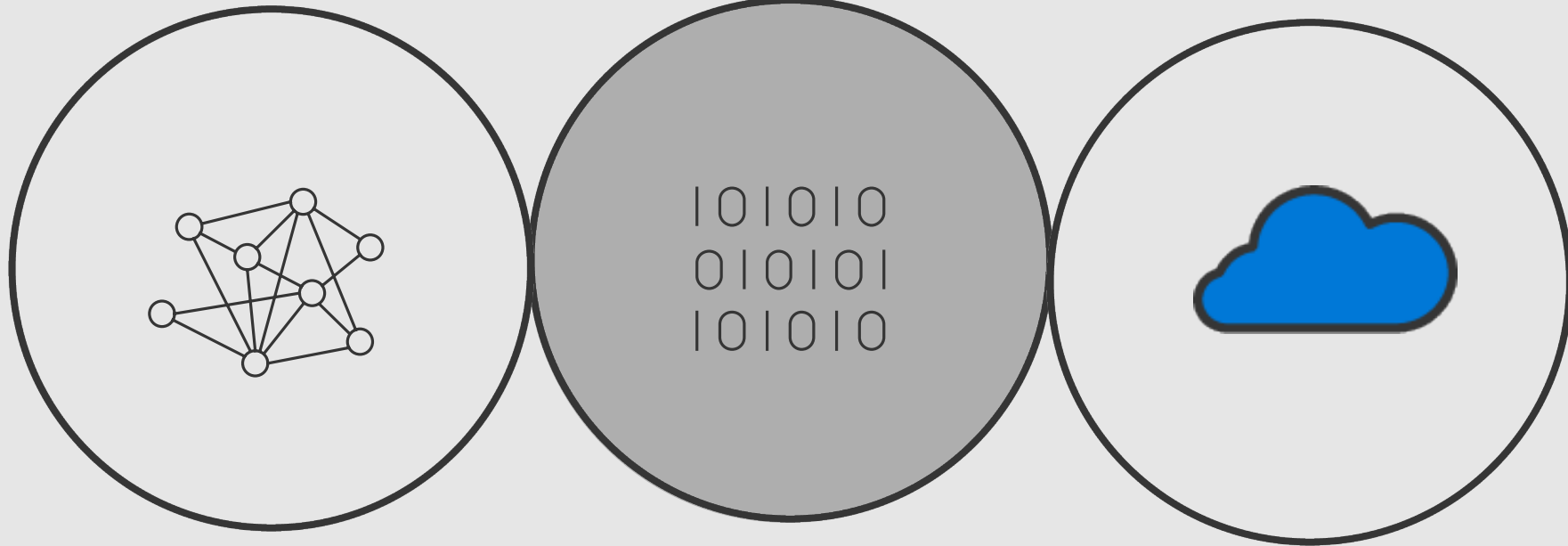
Privacy Café,  
14 January 2020

**Data Protection**  
institute 

Lorelien Hoet,  
Government Affairs Director



# Artificial Intelligence today

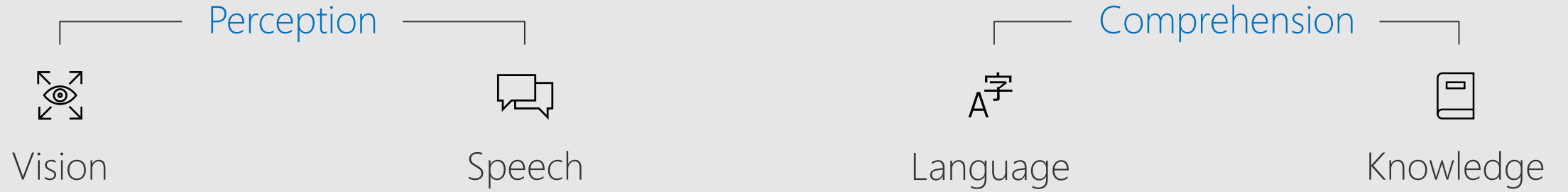


Comprehensive  
Data

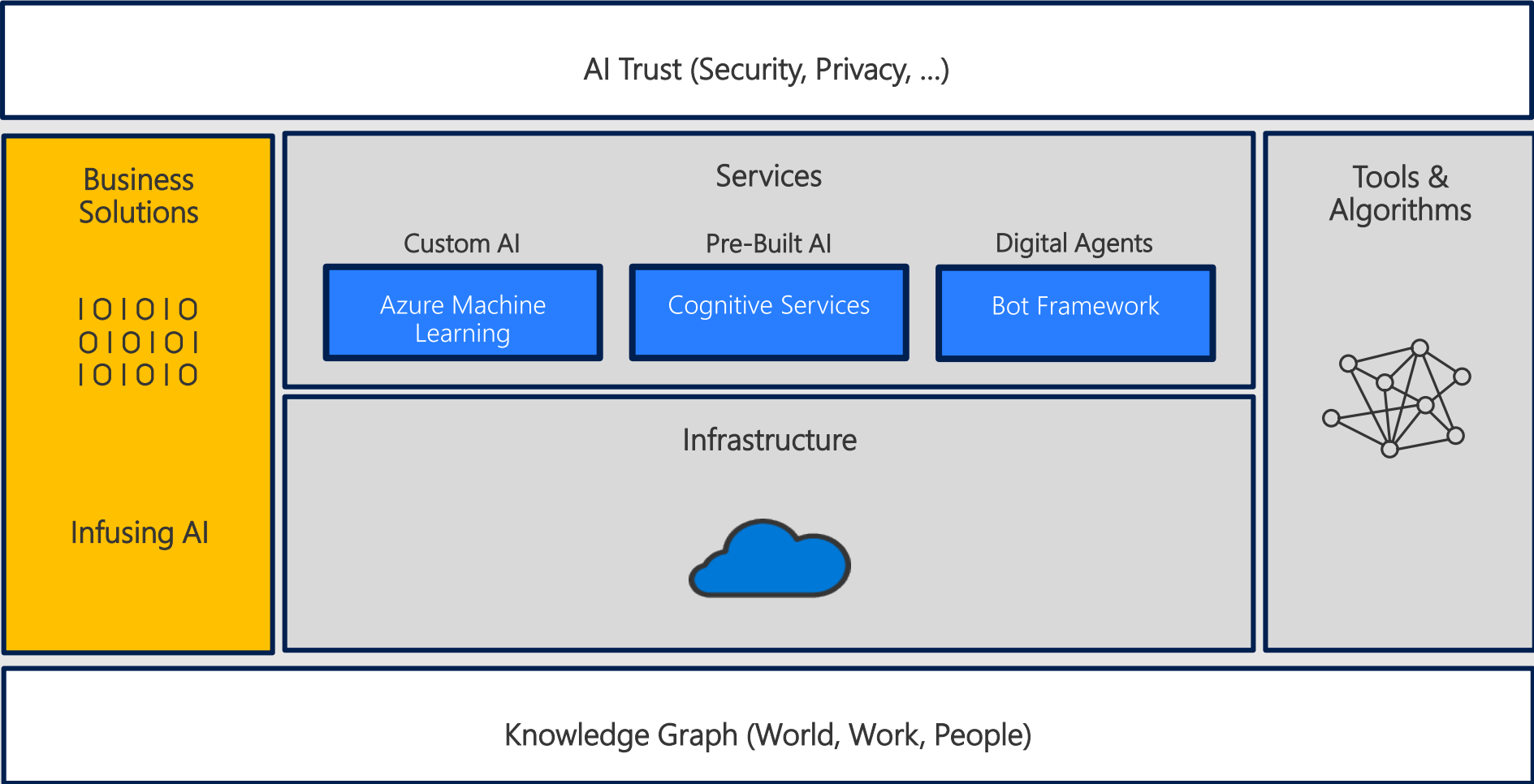
Powerful  
Algorithms  
&  
Productive  
Platforms

Big  
Computing in  
the Cloud

# Computers **learning** the world



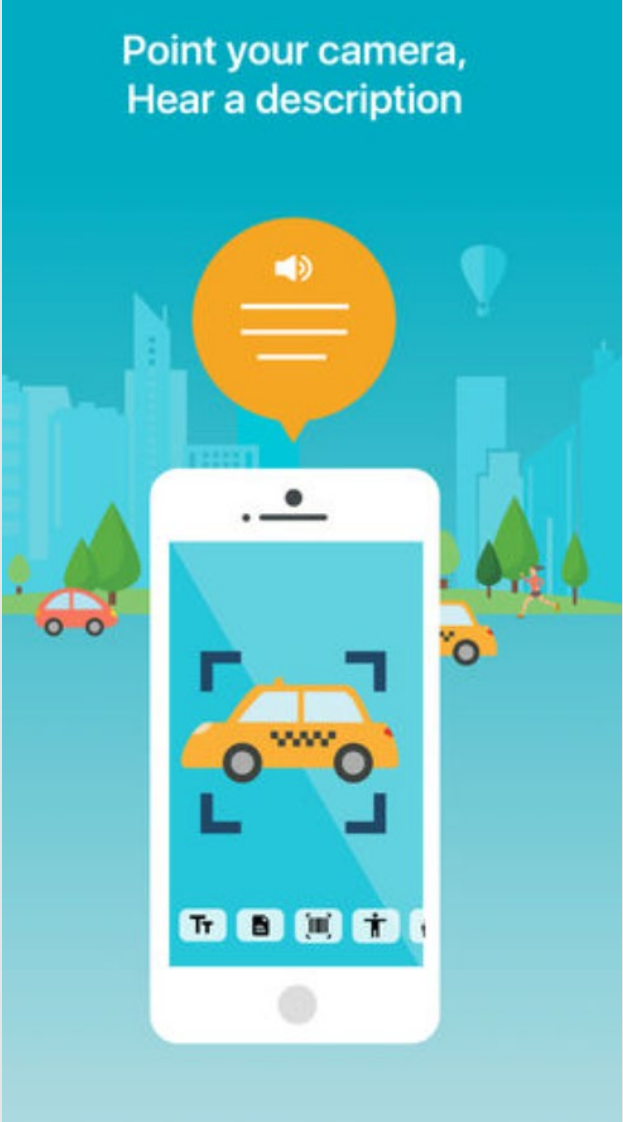
# Microsoft AI solutions



# Other Microsoft examples



## Seeing AI



- Recognizing a short text
- Recognizing a product
- Recognizing currency
- Recognizing a scene
- Recognizing handwriting
- Recognizing light

# AI raises ethical, legal & societal issues

## *Facial Recognition Is Accurate, if You're a White Guy*

By STEVE LOHR FEB. 9, 2018

Facial recognition technology is improving by leaps and bounds. Commercial software can now tell the gender of a

TECHNOLOGY

## *Self-Driving Uber Car Kills Pedestrian in Arizona*

BUSINESS DAY

## *Fatal Tesla Crash Raises New Questions About Autopilot System*

By NEAL E. BOUDETTE MARCH 31, 2018

These disparate results, calculated by Joy Buolamwini of M.I.T. Media Lab, show how some of the biases built into artificial intelligence, the computer system

**Brands are taking back control of digital advertising**



## How Democracy Can Survive Big Data



Colin Koopman

THE STONE MARCH 22, 2018

Only a few years ago, the idea that for-profit companies and foreign agents could use powerful data technologies to disrupt American democracy would have seemed laughable to most, a plotline from a Cold War espionage movie. And the idea that the American system would be compromised

Turkish English

O bir doktor. He is a doctor.

O bir hemşire. She is a nurse.

**ROBOT INDEMNITY**

# Companies are on the hook if their hiring algorithms are biased

By Dave Gershgorn • October 22, 2018

## Germany's self-driving car ethicists: All lives matter

By Dave Gershgorn • August 24, 2017



# The New York Times

## Facial Recognition Is Accurate, if You're a White Guy

By STEVE LOHR FEB. 9, 2018



Gender was misidentified in up to 1 percent of lighter-skinned males in a set of 385 photos.

Gender was misidentified in up to 12 percent of darker-skinned males in a set of 318 photos.



Gender was misidentified in up to 7 percent of lighter-skinned females in a set of 296 photos.

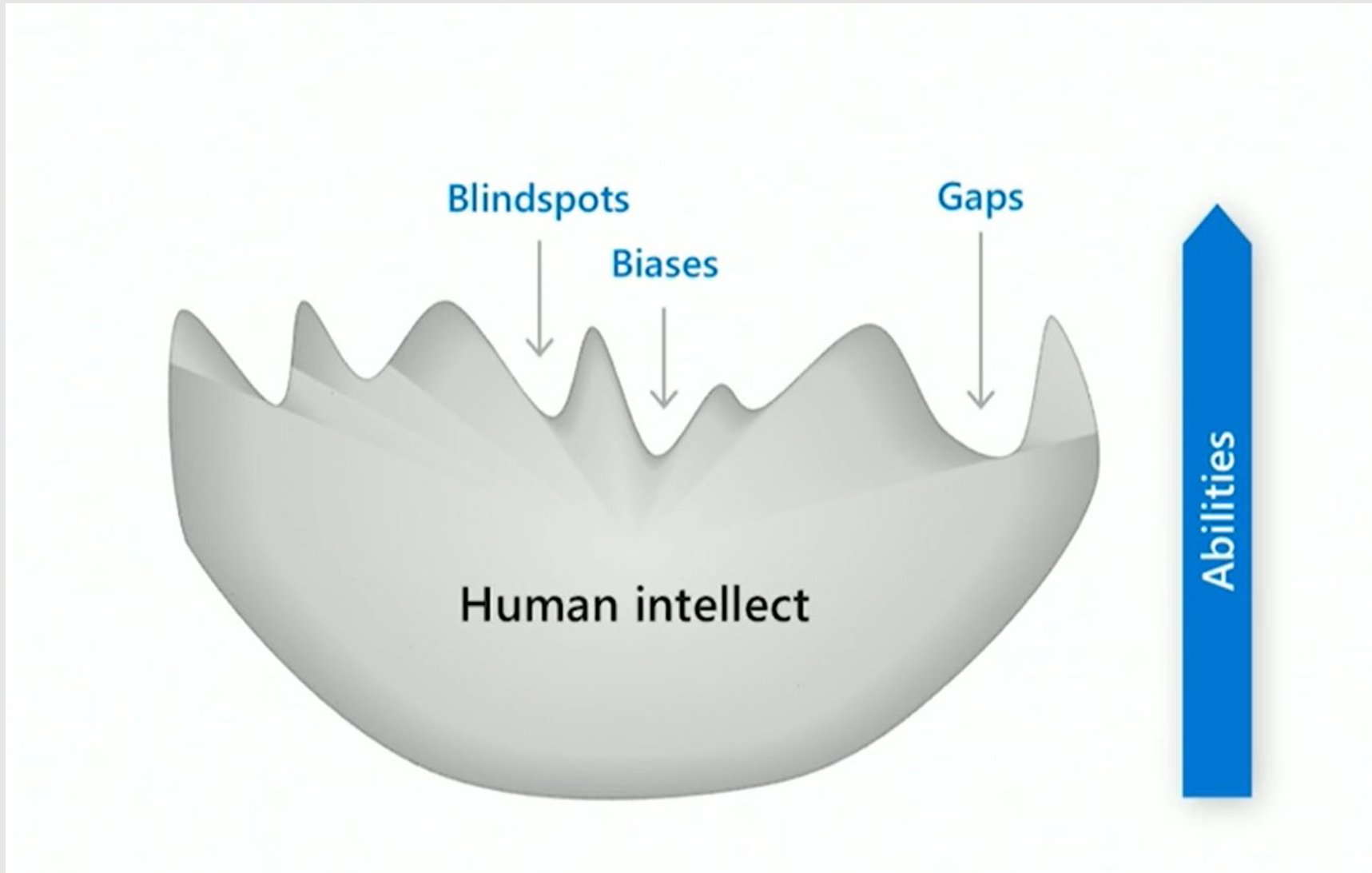
Gender was misidentified in 35 percent of darker-skinned females in a set of 271 photos.

# FEDERAL COURT RULES AGAINST IDAHO DEPARTMENT OF HEALTH AND WELFARE IN MEDICAID CLASS ACTION

[https://www.youtube.com/watch?v=yv\\_8dx7g-WA](https://www.youtube.com/watch?v=yv_8dx7g-WA)

# Master Human – AI Collaboration

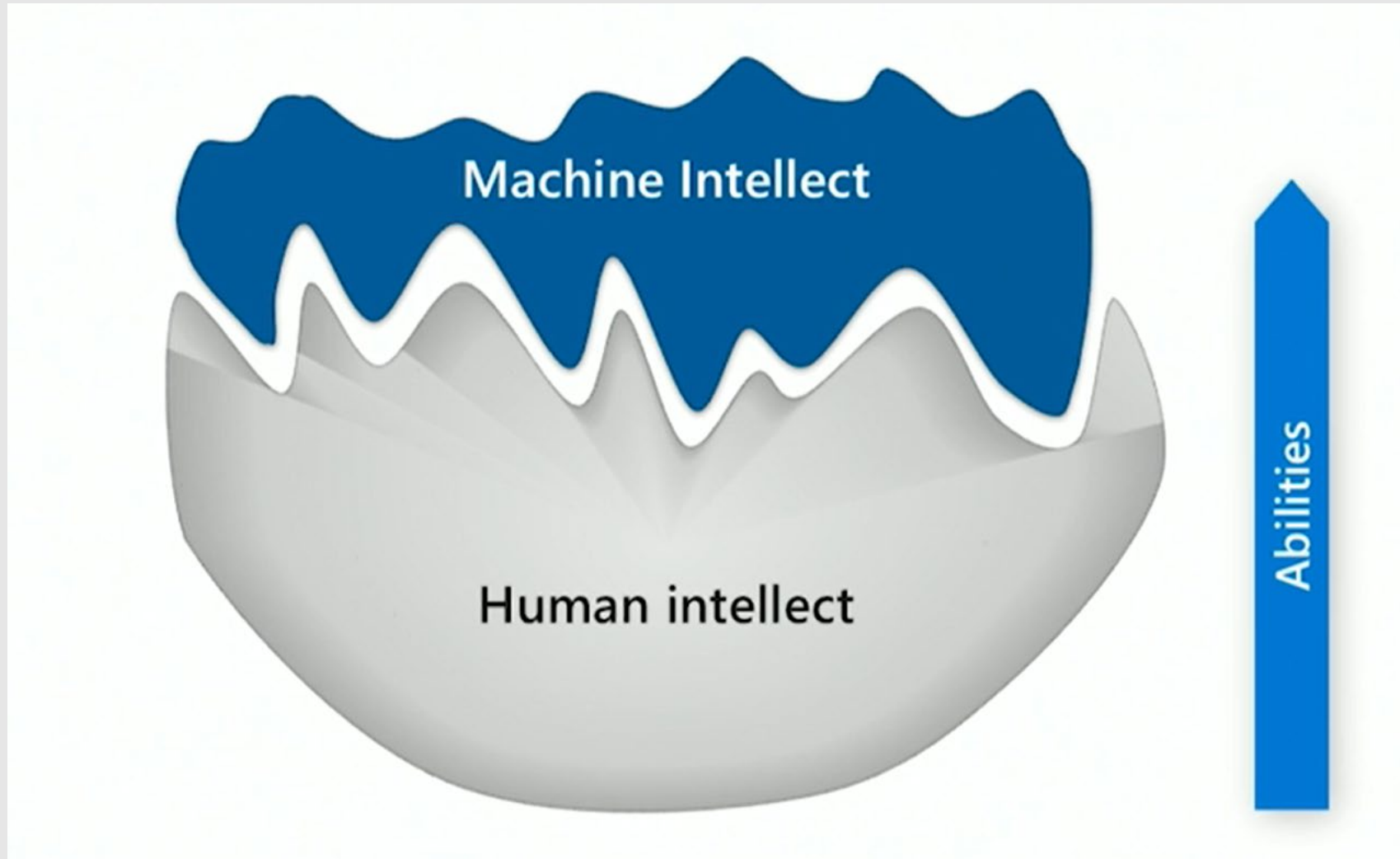
*Leverage results of Cognitive Psychology*



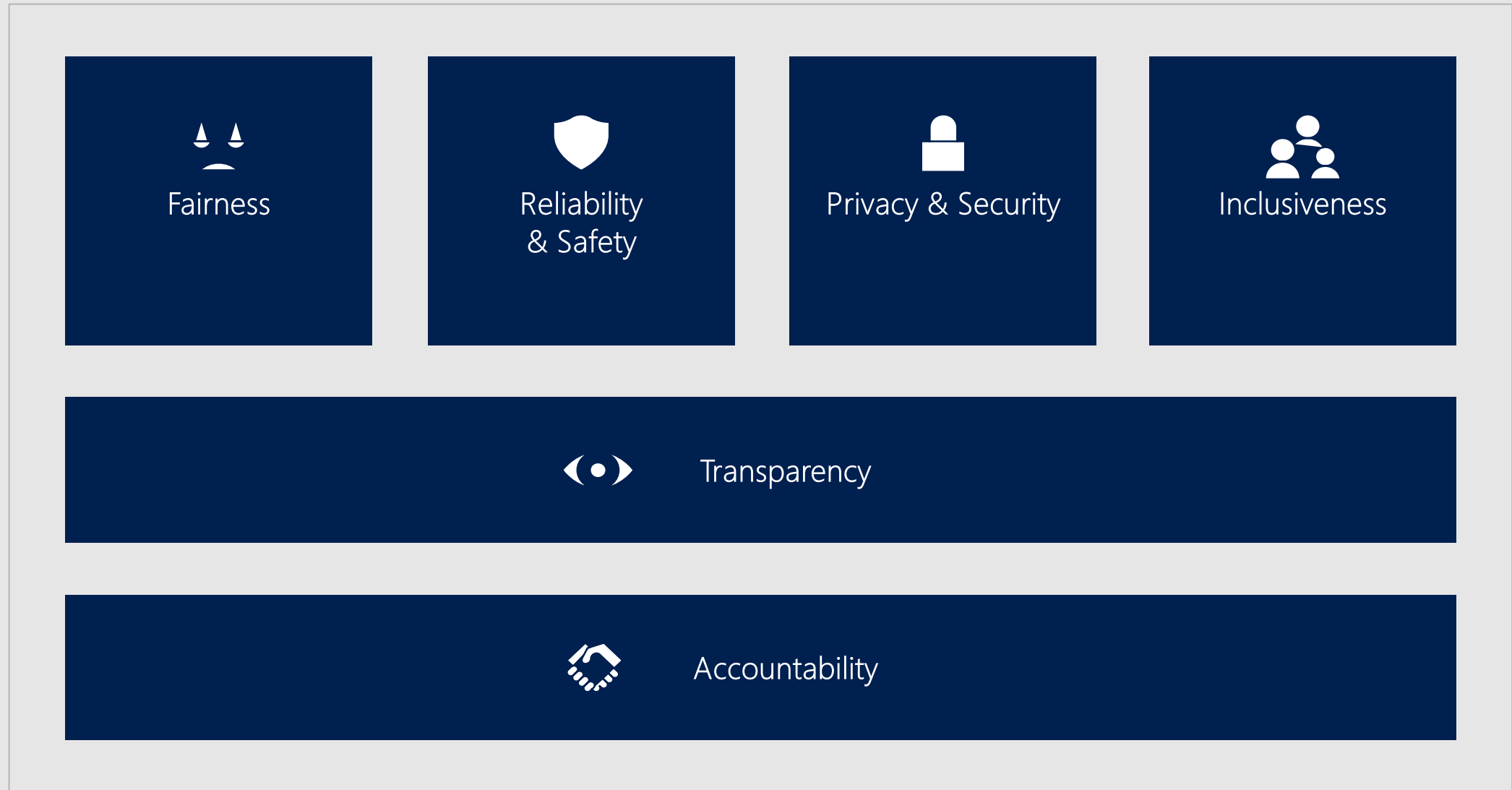


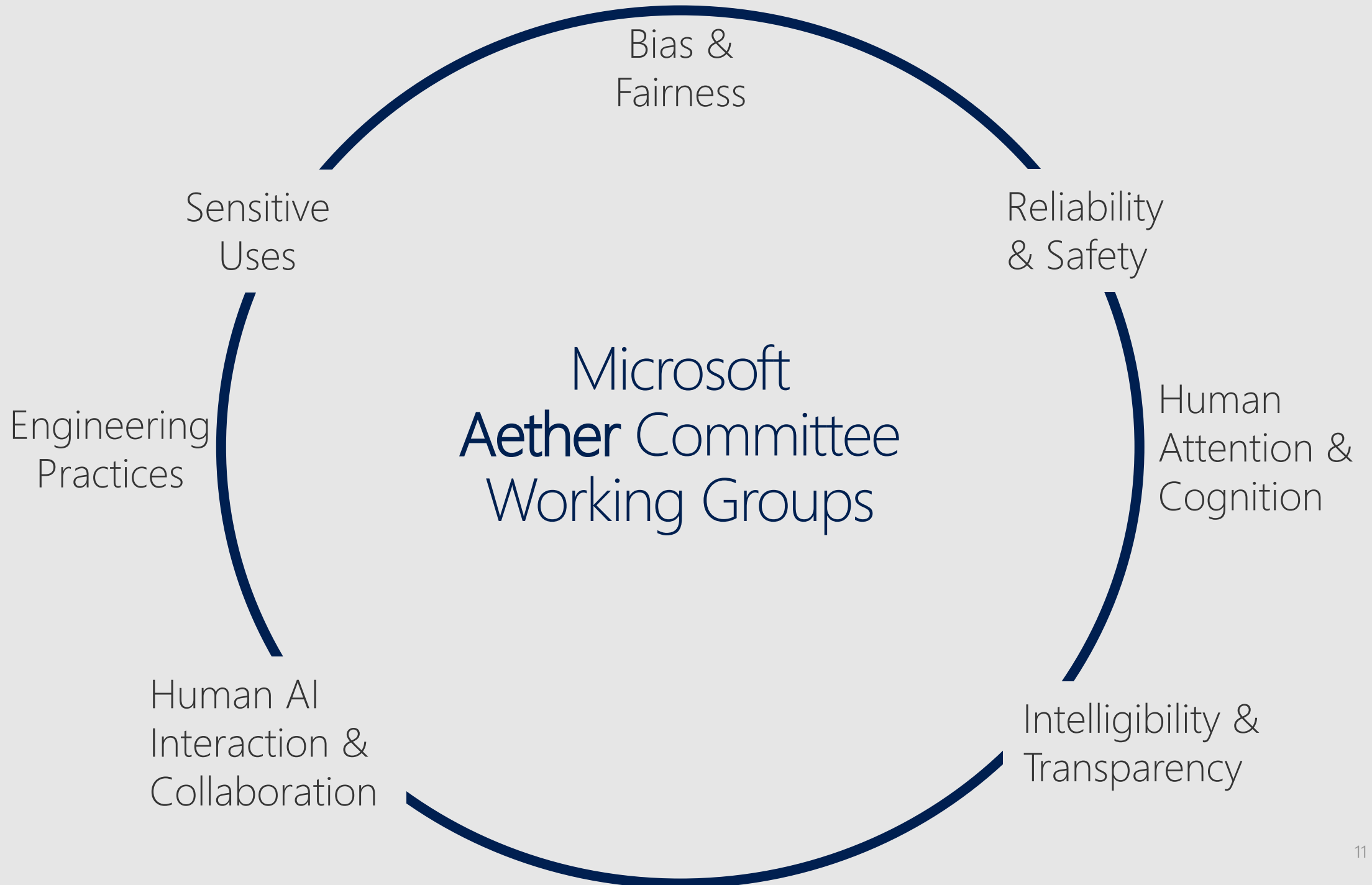
# Master Human – AI Collaboration

*Leverage results of Cognitive Psychology*



# Microsoft's ethical design framework for AI





Bias &  
Fairness

Reliability  
& Safety

Human  
Attention &  
Cognition

Intelligibility &  
Transparency

Human AI  
Interaction &  
Collaboration

Engineering  
Practices

Sensitive  
Uses

Microsoft  
**Aether** Committee  
Working Groups

# Responsible AI to augment human ingenuity

## Three questions we should always ask

### 1 System Purpose

Will the technology be used to augment the abilities of individuals and result in a positive impact on people and society? If no, seek guidance.

### 2 Technology Capability

Are the AI technology and people capable of performing the tasks that the AI system should do? If no, seek guidance.

### 3 Quality & Reliability

Will the technology be effectively designed, operated and maintained by a responsible party? If no, seek guidance.

## Sensitive categories of AI systems

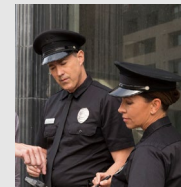
At Microsoft, we recognize that there are sensitive categories of Artificial Intelligent systems which are involved in making automated decisions and recommendations that may have a broad impact on people and society in the following ways:



Denial of Consequential Services



Risk of Harm



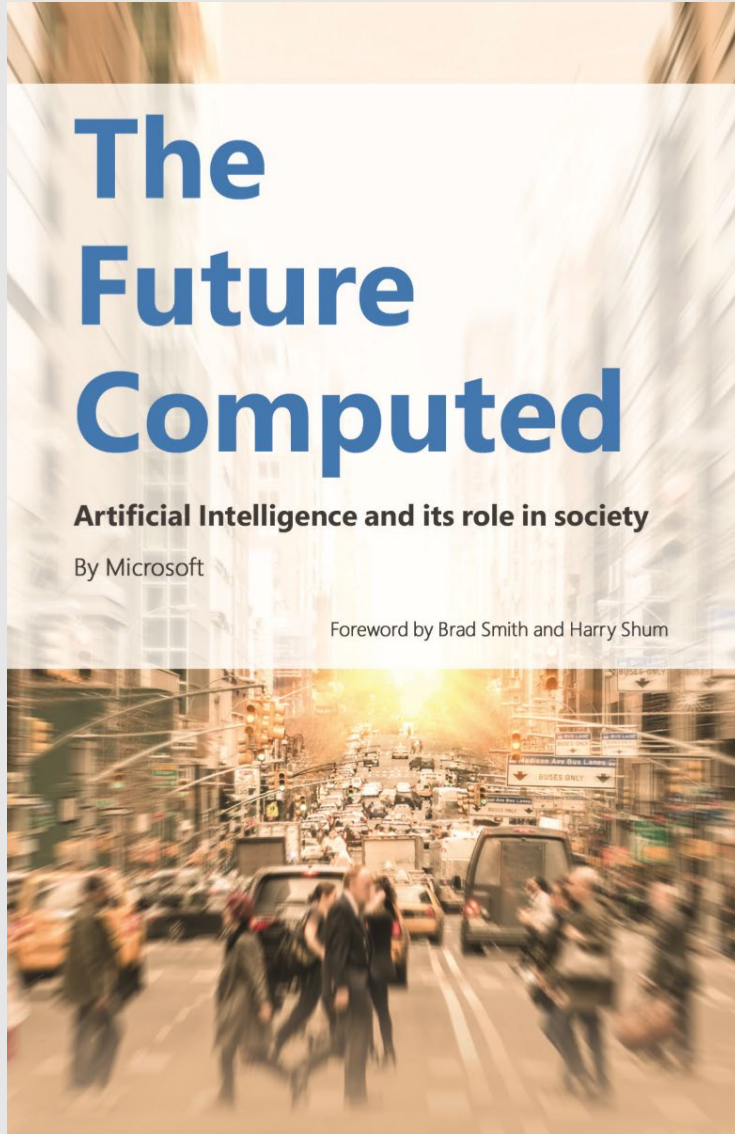
Personal Freedom

# Beyond Microsoft ....



SCOTT THURM BUSINESS 07.13.18 11:00 AM  
**MICROSOFT CALLS FOR FEDERAL  
REGULATION OF FACIAL  
RECOGNITION**

# Requires broad societal reflection



*As technology evolves so quickly, those of us who create AI, cloud and other innovations will know more than anyone else how these technologies work. But that doesn't necessarily mean that we will know how best to address the role they should play in society.*

*This requires that people in government, academia, business, civil society, and other interested stakeholders come together to help shape this future.*

# Governance

## Artificiële Intelligentie: Oprichting Kenniscentrum Data & Maatschappij in kader Vlaams Beleidsplan AI

*Commissie voor Economie, Werk, Sociale Economie, Innovatie en Wetenschapsbeleid*  
*Artificiële Intelligentie (AI): gedachtewisseling*

### AI4Belgium

Home Introduction Objectives

Artificial Intelligence by and for people

**AI 4 Belgium** is a community-led approach to enable Belgian people and organizations to capture the opportunities of AI while facilitating the ongoing transition responsibly. **AI 4 Belgium** has the ambition to position Belgium in the European AI landscape.

#### Composition de la commission

##### AGENDA ROBONUMÉRIQUE

Président(s):

Ecolo-Groen: Gilles Vanden Burre

Vice-Président(s):

N-VA: Peter Dedecker

Membres Effectifs:

N-VA: Peter Dedecker

PS: Gwenaëlle Grovonijs

MR: Gilles Foret

CD&V: Jef Van den Bergh

Open Vld: Nele Lijnen


sp.a: Meryame Kitir

Ecolo-Groen: Gilles Vanden Burre

cdH: Anne-Catherine Goffinet

## Agoria ontwerpt 'digital skills passport' voor 4,5 miljoen Belgen

donderdag 23 mei 2019



European Commission

# Liability for Artificial Intelligence

and other emerging digital technologies

COMMUNICATION FROM THE COMMISSION TO THE EUROPEAN PARLIAMENT, THE EUROPEAN COUNCIL, THE COUNCIL, THE EUROPEAN ECONOMIC AND SOCIAL COMMITTEE AND THE COMMITTEE OF THE REGIONS

Artificial Intelligence for Europe

## High-Level Expert Group on Artificial Intelligence

Following an open selection process, the Commission has appointed 52 experts to a new High-Level Expert Group on Artificial Intelligence, comprising representatives from academia, civil society, as well as industry.



The **High-Level Expert Group on Artificial Intelligence (AI HLEG)** will have as a general objective to support the implementation of the European strategy on AI. This will include the elaboration of recommendations on future AI-related policy development and on ethical, legal and societal issues related to AI, including socio-economic challenges.